

DWELLERS

Architect, Engg. & Interior Designers



OFFICE -
DWELLERS, FIRST FLOOR, RAJ PLAZA, 75-
RAJPUR ROAD, DEHRADUN, UTTRAKHAND,
INDIA
CONTACT NO. - 09837307748 (M)

THE FIRM

Leading in Architectural services over last 25 years

DWELLERS is a design consultancy firm offering professional consultancy services in the fields of architecture, interior design, engineering, landscape & planning

01

The Architect, Mr. Ashish Mohan graduated in Architecture from the Govt. college of Architecture, lucknow and is registered with the Council of Architecture (under the Architects Registration Act 1972), with the Indian Institute of Architects (IIA) and with the Indian Institute of Interior Designers (IIID). He has been in private practice since graduating in 1998 and has experience of a wide variety of projects.

02

Furthermore he has been inducted in the Fraternity of Habitat Workers by HUDCO for his contributions in the field of Environmental Design. Numerous mentions of his work have appeared in the media, both print and electronic

03

DWELLERS is also closely associated with professional consultants in the field of structural-engineering, HVAC and fire fighting, building services and project management whose services are utilised as per the project requirements.

04



APPROACH TO DESIGN

DWELLERS strongly believes in the holistic approach to architectural design wherein all the elements of site planning, landscape, architecture, interiors, structural design and construction materials are harmoniously integrated into one comprehensive design

This comprehensive integration also responds to the constraints imposed by budgets, local site conditions, local laws and availability of skilled labour and materials.

Over the years DWELLERS has evolved a design philosophy that can be expressed in the following set of design intentions and goals –



1. Creation of architecture with a sense of place i.e. architecture with a distinctive character and identity, appropriate to its socio - physical setting



2. Creation of an architecture that actively responds to the site-conditions and climate in terms of planning modules, architectural-forms and construction materials.



3. Creation of an architecture 'rich and varied' in spatial experiences thereby generating a dynamic relationship between architectural form and the users



4. Creation of architecture with the clients' needs and aspirations as a guiding force



5. Creation of an architecture which actively employs the tools of scale, structure, solids & voids, light & shade, inside to outside links and materials and thereby enabling an image appropriate to both, the building function as well as to the building user



6. Creation of an architecture that incorporates innovation in its building structure, building - services and building-materials with an end towards generating architecture that is environment friendly.



7. Creation of architecture towards experiencing the uniqueness of spaces. Everything else falls into place as a derivation of that – the scale, the visual axis, the circulation pattern, the placement of windows & doors etc. It is this intangible space that we mould & design – giving it a form that is continuous and in a sense so real it transcends intangibility to tangibility.



INFRASTRUCTURE

Headquartered in a self-owned and self-designed 400 square feet office premises at SHIPRA SUN CITY, GHAZIABAD U.P INDIA DWELLERS Has the required infrastructure to ably handle any Design Consultancy project. Fully computerized, the Firm is well versed with the relevant CAD software's needed for an efficient consultancy office. The computers are supported by in house printing, plotting and copying equipment. DWELLERS employs architects, draughts-men and engineers that enable the firm to deliver the design solutions as envisaged by the partners.



PROJECTS



COMMERCIAL
PROJECTS



INDUSTRIAL
PROJECTS



RESIDENTIAL
PROJECTS

COMMERCIAL



4 Star category hotel Canopy Green's, near Shivalik International School, Saharanpur road, Dehradun.



Commercial complex cum Shopping mall project of Mr. Sanjeev Khurana at Subhash road, Dehradun.

COMMERCIAL

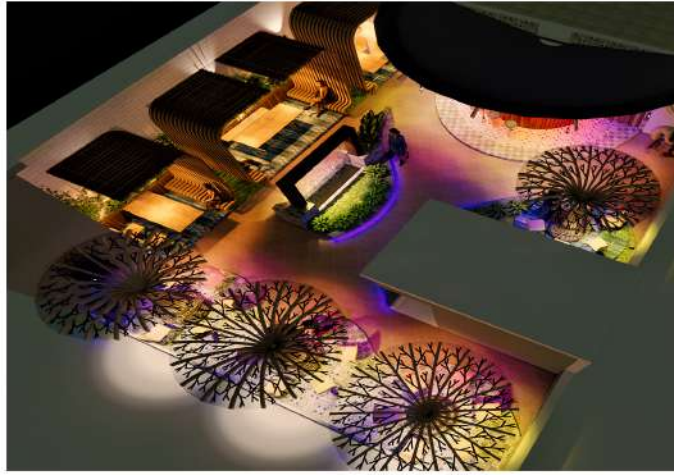


Commercial complex for M/S Hurla hardwares, Haridwar Road, Dharampur, Dehradun.



Commercial complex for M/S Aanandam, Patel Nagar Dehradun

COMMERCIAL



Restaurant cum Bristo, Hotel project for M/S Chanchal Sweets & Beverages, Haridwar road, Dharampur, Dehradun.



Shiva Pharmaceutical at New cantt road, Dehradun.

INDUSTRIAL



Industrial unit for M/S G.P.P.L. Industries, Penukonda, Distt. Anantpur, Andhra Pradesh.



Industrial unit for M/S K.G.P.L. Industries, Sidcul, Distt. Sitarganj, Uttrakhand.

INDUSTRIAL



Industrial unit for M/S K.G.P.L. Industries, Kasuya, Yokohama Group at A22, Meerut Road Industrial area, Ghaziabad.



Industrial unit for M/S Alpha Precisions Products Pvt. Ltd., at RICCO, Urban state Industrial area, Dholpur, Rajasthan.

RESIDENTIAL

More than 200 homes in various category of colonial contemporary and Retrofittings homes.



INTERIOR



|| ASSOCIATION

We are also collaborated with many companies who based in India & Abroad .

These are :-

- 1.DLF Group, (National & International firm)
- 2.UNITECH Group, (National & International firm)
- 3.Earth Group infrastructure ltd, (National & International firm)
- 4.Aura housing pvt, (National & International firm)
- 5.Crown group of companies, (National & International firm)
- 6.Coral group, (National & International firm)
- 7.Ganpati builder group, (National firm)
- 8.Devagra group (National firm)
- 9.Kangaroo.com (National & International firm)

THANK YOU

OFFICE -
DWELLERS, FIRST FLOOR, RAJ PLAZA, 75-
RAJPUR ROAD, DEHRADUN, INDIA
CONTACT NO. - 09837307748 (M)
EMAIL ID - mohanashish711@gmail.com

